



ALLEGION™

C3000

Cylinders
with traditional
protected keys.



Education



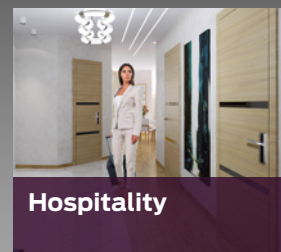
Residential



Commercial



Healthcare



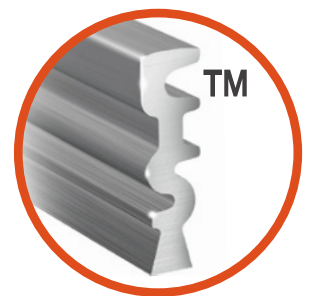
Hospitality

**C3000
cylinders
and keys:**
raising the level
of security.



Protected key duplication

The key supplied with the **C3000 cylinders** is protected by a registered shape trademark which prevents illegal key duplication as copies can only be made at **CISA C3000 Centres**.



Secure cylinders

C3000 cylinders are protected by drill-resistant pins and the patented BKP system which is resistant to bumping. Specifically, **C3000 S** cylinders have additional elements which increase **drill resistance** and are fitted with the **SNAP RESISTANT** feature. This patented solution by CISA, which consists of a segment pack which is visible from both sides of the cylinder, increases resistance to pulling.

Choose
the ideal
configuration
for all accesses.



C3000



Pedestrian
gates.

C3000 S



Apartment
building
entrances.

C3000



Communal areas
(boiler rooms,
garages, cellars).



C3000 S



Perimeter
entrances.

C3000



Wards.

C3000 S



Sensitive
areas.

Compatibility

C3000 and **C3000 S** cylinders **are compatible** because it is possible to use the same key on both cylinders when managing access.

Access management

The C3000 range is specifically **designed to manage common entrance systems** for apartment buildings and **master key systems** for hospitals, schools and commercial buildings.

- The compatibility of the C3000 cylinders offers greater **flexibility when managing security levels of different accesses**, where **more protection** is needed against forced entry. It also helps **keep maintenance costs down**, especially as regards key duplication.
- Security levels are higher but costs are lower with this range, as the key is in nickel silver alloy and the quality of the entire cylinder is such that the whole system has a life expectancy of **almost 15 years** for an apartment with 4 people*.

**Estimates have been made considering the highest grade of the European Standard EN1303:2015 of 100,000 cycles which correspond to an average expected life of around 10 years.*

C3000 S and C3000 cylinders.



CYLINDER SECURITY

The technical features below refer to cylinders C3000 and C3000 S where specified.

Attack Resistance

- High resistance to pulling and tearing for the **C3000 S** cylinder, thanks to the Snap Resistant feature, a dual-material steel core visible when the cylinder is installed on the door.
- High resistance to bumping or percussion, thanks to the BKP (Bump Key Power) device.
- High resistance to forced entry using the wax impression technique, thanks to the BKP device and the special configuration of the springs.
- High drill resistance, thanks to the hardened steel key biting system and inserts for the **C3000 S** cylinder.
- Push resistance due to the projecting cam.

KEY SECURITY

Key Related Security

- Key protected by 3D Trade Mark for effective protection against illegal key duplication.
- Security Card for authorised key duplication by CISA and CISA authorised centres.
- Over 240,000 possible combinations or different keys.

Master Keying Potential

The 6-pin key biting system offers excellent access management potential. E.g.: 15,000 different cylinders with one master key.

RELIABILITY

Durability

- Tested for over 100,000 cycles.

PATENTS AND CERTIFICATIONS

- **C3000 S** In compliance with EN 1303:2015 160B0C6D

Attack Resistance: **D**

0	A	B	C	D
---	---	---	---	----------

Key Related Security: **6**

1	2	3	4	5	6
---	---	---	---	---	----------

Durability: **6**

1	2	3	4	5	6
---	---	---	---	---	----------



- **C3000** In compliance with EN 1303: 2015 160B0C6A

Attack Resistance: **A**

0	A	B	C	D
---	----------	---	---	---

Key Related Security: **6**

1	2	3	4	5	6
---	---	---	---	---	----------

Durability: **6**

1	2	3	4	5	6
---	---	---	---	---	----------



- Key protected by 3D Trade Mark no. 1 236 248 and Community Design registered at no. 2669630
- BKP device: patent no. PCT/WO 2007/074163 A1
- **C3000 S** Snap Resistant patent no. EP1583878



APPLICATIONS

C3000 cylinders are the perfect solution for average security applications for apartment buildings. They also offer excellent master keying potential for companies, shopping centres, universities and hospitals, combining access management with protected key duplication.

TECHNICAL FEATURES

Cylinder

- 6-pin key biting system.
- Brass body.
- Brass plugs.
- Self-lubricating sintered DIN steel cam, clutch-type for the **C3000 S**.
- Hardened steel pins.
- Variable shape hardened steel drivers.
- Phosphor bronze and steel springs.

Key

- Paracentral keyway.
- In nickel silver alloy.
- Ergonomic key bow.
- Key blade 12 mm long.
- Numerical code on key bow.
- Key thickness 2..4 mm.
- Depth 0.48 mm.

Finishes

- Standard: nickel-plated brass (fin.12).
- On request: sanded brass (fin.00).

Options on request

- KA, MK, GMK, CE, CA, PP.

Supplied as standard

- 3 keys.
- Security Card.
- Fixing screw.

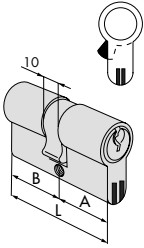


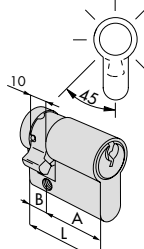
Drill resistance

BKP

Resistance to bumping BKP

Snap resistant system

TYPE	DESCRIPTION	COMM. DIM.	L	A	B	PINS	KEY ITEM	kg		ITEM						
								UNIT WEIGHT	No. PIECES	Type	Dim.	Hand	Fin.	Pers.	Spec.	
	<ul style="list-style-type: none"> Double cylinder 	30/30	59.0	29.5	29.5	6	100430 001	0.235	12	1	w	07	0	12		
		30/35	64.0	29.5	34.5	6	100430 001	0.243	12	1	ON3SI	26	0	12		
		35/35	69.0	34.5	34.5	6	100430 001	0.258	12	1	ON3SI	13	0	12		
		40/30	69.0	39.5	39.5	6	100430 001	0.272	12	1	ON3SI	12	0	12		
		30/45	74.0	29.5	44.5	6	100430 001	0.272	12	1	ON3SI	27	0	12		
		35/40	74.0	34.5	39.5	6	100430 001	0.274	12	1	ON3SI	28	0	12		
		30/50	79.0	29.5	49.5	6	100430 001	0.274	12	1	ON3SI	17	0	12		
		35/45	79.0	34.5	44.5	6	100430 001	0.301	12	1	ON3SI	19	0	12		
		40/40	79.0	39.5	39.5	6	100430 001	0.289	12	1	ON3SI	18	0	12		
		30/55	84.0	29.5	54.5	6	100430 001	0.289	12	1	ON3SI	33	0	12		
		35/50	84.0	34.5	49.5	6	100430 001	0.304	12	1	ON3SI	31	0	12		
		40/45	84.0	39.5	44.5	6	100430 001	0.360	12	1	ON3SI	30	0	12		
		30/60	89.0	29.5	59.5	6	100430 001	0.360	12	1	ON3SI	20	0	12		
		35/55	89.0	34.5	54.5	6	100430 001	0.320	12	1	ON3SI	32	0	12		
		40/50	89.0	39.5	49.5	6	100430 001	0.332	12	1	ON3SI	21	0	12		
		45/45	89.0	44.5	44.5	6	100430 001	0.320	12	1	ON3SI	29	0	12		
		30/65	94.0	29.5	64.5	6	100430 001	0.333	12	1	ON3SI	41	0	12		
		35/60	94.0	34.5	59.5	6	100430 001	0.334	6	1	ON3SI	38	0	12		
		40/55	94.0	39.5	54.5	6	100430 001	0.390	6	1	ON3SI	42	0	12		
		45/50	94.0	44.5	49.5	6	100430 001	0.355	6	1	ON3SI	39	0	12		
		30/70	99.0	29.5	69.5	6	100430 001	0.334	6	1	ON3SI	24	0	12		
		35/65	99.0	34.5	64.5	6	100430 001	0.349	6	1	ON3SI	22	0	12		
		40/60	99.0	39.5	59.5	6	100430 001	0.349	6	1	ON3SI	25	0	12		
		45/55	99.0	44.5	54.5	6	100430 001	0.349	6	1	ON3SI	43	0	12		
		50/50	99.0	49.5	49.5	6	100430 001	0.349	6	1	ON3SI	23	0	12		
		40/65	104.0	39.5	64.5	6	100430 001	0.349	6	1	ON3SI	44	0	12		
		45/60	104.0	44.5	59.5	6	100430 001	0.349	6	1	ON3SI	54	0	12		
		30/75	104.0	29.5	74.5	6	100430 001	0.349	6	1	ON3SI	56	0	12		
		55/50	104.0	54.5	49.5	6	100430 001	0.400	6	1	ON3SI	64	0	12		
		35/70	104.0	34.5	69.5	6	100430 001	0.378	6	1	ON3SI	49	0	12		
		35/75	109.0	34.5	74.5	6	100430 001	0.349	6	1	ON3SI	57	0	12		
		30/80	109.0	29.5	79.5	6	100430 001	0.402	6	1	ON3SI	37	0	12		
		40/70	109.0	39.5	69.5	6	100430 001	0.378	6	1	ON3SI	35	0	12		
		50/60	109.0	49.5	59.5	6	100430 001	0.378	6	1	ON3SI	36	0	12		
		55/55	109.0	54.5	54.5	6	100430 001	0.420	6	1	ON3SI	70	0	12		
30/85	114.0	29.5	84.5	6	100430 001	0.420	6	1	ON3SI	77	0	12				
50/65	114.0	49.5	64.5	6	100430 001	0.410	6	1	ON3SI	65	0	12				
55/60	114.0	54.5	59.5	6	100430 001	0.378	6	1	ON3SI	71	0	12				
40/75	114.0	39.5	74.5	6	100430 001	0.410	6	1	ON3SI	59	0	12				
45/70	114.0	44.5	69.5	6	100430 001	0.410	6	1	ON3SI	61	0	12				
45/75	119.0	44.5	74.5	6	100430 001	0.450	6	1	ON3SI	62	0	12				
30/90	119.0	29.5	89.5	6	100430 001	0.450	6	1	ON3SI	52	0	12				
40/80	119.0	39.5	79.5	6	100430 001	0.450	6	1	ON3SI	60	0	12				
60/60	119.0	59.5	59.5	6	100430 001	0.450	6	1	ON3SI	40	0	12				
50/70	119.0	49.5	69.5	6	100430 001	0.450	6	1	ON3SI	66	0	12				
30/100	129.0	29.5	99.5	6	100430 001	0.460	6	1	ON3SI	53	0	12				

	<ul style="list-style-type: none"> Single cylinder with 14 position adjustable cam 	30/10	39.5	29.5	10.0	6	100430 001	0.185	12	1	ON324	02	0	12		
		33/10	32.5	29.5	10.0	6	100430 001	0.185	12	1	ON324	09	0	12		
		35/10	44.5	34.5	10.0	6	100430 001	0.195	12	1	ON324	07	0	12		
		40/10	49.5	39.5	10.0	6	100430 001	0.215	12	1	ON324	03	0	12		
		45/10	54.5	44.5	10.0	6	100430 001	0.225	12	1	ON324	08	0	12		
		50/10	59.5	49.5	10.0	6	100430 001	0.245	12	1	ON324	04	0	12		
		60/10	69.5	59.5	10.0	6	100430 001	0.275	12	1	ON324	05	0	12		
		70/10	79.5	69.5	10.0	6	100430 001	0.305	12	1	ON324	06	0	12		

TYPE	DESCRIPTION	COMM. DIM.	L	A	B	PINS	KEY ITEM	kg	NO. PIECES	ITEM						
										UNIT WEIGHT	NO. PIECES	Type	Dim.	Hand	Fin.	Pers.
	<ul style="list-style-type: none"> Double cylinder pre-set for thumb turn installation On request: thumb turn knobs series 06353, 06355, 06356, 06357 	30/30	59.0	29.5	29.5	6	100430 001	0.244	12	1	ON3S2	07	0	12		
		30/35	64.0	29.5	34.5	6	100430 001	0.264	12	1	ON3S2	26	0	12		
		35/30	64.0	34.5	29.5	6	100430 001	0.259	12	1	ON3S2	81	0	12		
		33/33	65.0	32.5	32.5	6	100430 001	0.267	12	1	ON3S2	10	0	12		
		30/40	69.0	29.5	39.5	6	100430 001	0.279	12	1	ON3S2	82	0	12		
		35/35	69.0	34.5	34.5	6	100430 001	0.279	12	1	ON3S2	13	0	12		
		40/30	69.0	39.5	29.5	6	100430 001	0.279	12	1	ON3S2	12	0	12		
		35/40	74.0	34.5	39.5	6	100430 001	0.294	12	1	ON3S2	28	0	12		
		30/45	74.0	29.5	44.5	6	100430 001	0.294	12	1	ON3S2	27	0	12		
		40/35	74.0	39.5	34.5	6	100430 001	0.294	12	1	ON3S2	83	0	12		
		45/30	74.0	44.5	29.5	6	100430 001	0.294	12	1	ON3S2	91	0	12		
		30/50	79.0	29.5	49.5	6	100430 001	0.318	6	1	ON3S2	17	0	12		
		35/45	79.0	34.5	44.5	6	100430 001	0.309	6	1	ON3S2	19	0	12		
		40/40	79.0	39.5	39.5	6	100430 001	0.309	6	1	ON3S2	18	0	12		
		45/35	79.0	44.5	34.5	6	100430 001	0.309	6	1	ON3S2	85	0	12		
		40/45	84.0	39.5	44.5	6	100430 001	0.324	6	1	ON3S2	30	0	12		
		45/40	84.0	44.5	39.5	6	100430 001	0.324	6	1	ON3S2	84	0	12		
		50/35	84.0	49.5	34.5	6	100430 001	0.324	6	1	ON3S2	94	0	12		
		30/60	89.0	29.5	59.5	6	100430 001	0.353	6	1	ON3S2	20	0	12		
		40/50	89.0	39.5	49.5	6	100430 001	0.350	6	1	ON3S2	21	0	12		
		45/45	89.0	44.5	44.5	6	100430 001	0.347	6	1	ON3S2	29	0	12		
		40/55	94.0	39.5	54.5	6	100430 001	0.355	6	1	ON3S2	42	0	12		
		55/40	94.0	54.5	39.5	6	100430 001	0.367	6	1	ON3S2	98	0	12		
		45/50	94.0	44.5	49.5	6	100430 001	0.367	6	1	ON3S2	39	0	12		
		40/60	99.0	39.5	59.5	6	100430 001	0.367	6	1	ON3S2	25	0	12		
		45/55	99.0	44.5	54.5	6	100430 001	0.370	6	1	ON3S2	43	0	12		
		50/50	99.0	49.5	49.5	6	100430 001	0.370	6	1	ON3S2	23	0	12		
		50/55	104.0	49.5	54.5	6	100430 001	0.398	6	1	ON3S2	70	0	12		
		40/65	104.0	39.5	64.5	6	100430 001	0.384	6	1	ON3S2	44	0	12		
		45/60	104.0	44.5	59.5	6	100430 001	0.400	6	1	ON3S2	54	0	12		
		55/50	104.0	54.5	49.5	6	100430 001	0.400	6	1	ON3S2	64	0	12		
		30/80	109.0	29.5	79.5	6	100430 001	0.400	6	1	ON3S2	37	0	12		
40/70	109.0	39.5	69.5	6	100430 001	0.400	6	1	ON3S2	35	0	12				
50/60	109.0	49.5	59.5	6	100430 001	0.400	6	1	ON3S2	36	0	12				
60/50	109.0	59.5	49.5	6	100430 001	0.400	6	1	ON3S2	89	0	12				
35/80	114.0	34.5	79.5	6	100430 001	0.400	6	1	ON3S2	58	0	12				
55/60	114.0	54.5	59.5	6	100430 001	0.400	6	1	ON3S2	71	0	12				
45/70	114.0	44.5	69.5	6	100430 001	0.400	6	1	ON3S2	61	0	12				
50/65	114.0	49.5	64.5	6	100430 001	0.400	6	1	ON3S2	65	0	12				
55/65	119.0	54.5	64.5	6	100430 001	0.410	6	1	ON3S2	72	0	12				
65/55	119.0	64.5	54.5	6	100430 001	0.410	6	1	ON3S2	86	0	12				
60/60	119.0	59.5	59.5	6	100430 001	0.410	6	1	ON3S2	40	0	12				

	<ul style="list-style-type: none"> Double cylinder pre-set for thumb turn installation with adjustable shaft To install with protective rose item 1.06458.20 On request: thumb turn knobs series 06353, 06355, 06356, 06357 	30/30	59.0	29.5	29.5	6	100430 001	0.284	6	1	ON3S7	07	0	12		
		35/30	64.0	34.5	29.5	6	100430 001	0.294	6	1	ON3S7	81	0	12		
		40/30	69.0	39.5	29.5	6	100430 001	0.312	6	1	ON3S7	12	0	12		
		45/30	74.0	44.5	29.5	6	100430 001	0.320	6	1	ON3S7	91	0	12		
		50/30	79.0	49.5	29.5	6	100430 001	0.329	6	1	ON3S7	90	0	12		
		55/30	84.0	54.5	29.5	6	100430 001	0.345	6	1	ON3S7	92	0	12		
		60/30	89.0	59.5	29.5	6	100430 001	0.359	6	1	ON3S7	87	0	12		
		65/30	94.0	64.5	29.5	6	100430 001	0.359	6	1	ON3S7	A3	0	12		
		70/30	99.0	69.5	29.5	6	100430 001	0.370	6	1	ON3S7	88	0	12		
		80/30	110.0	79.5	29.5	6	100430 001	0.359	1	1	ON3S7	93	0	12		
		90/30	120.0	89.5	29.5	6	100430 001	0.392	1	1	ON3S7	C6	0	12		
		100/30	130.0	99.5	29.5	6	100430 001	0.398	1	1	ON3S7	C7	0	12		

TYPE	DESCRIPTION	COMM. DIM.	L	A	B	PINS	KEY ITEM	kg		ITEM					
								UNIT WEIGHT	NO. PIECES	Type	Dim.	Hand	Fin.	Pers.	Spec.
	<ul style="list-style-type: none"> Double cylinder 	30/30	59.0	29.5	29.5	6	100430 001	0.235	12	1	ON310	07	0	12	
		30/35	64.0	29.5	34.5	6	100430 001	0.243	12	1	ON310	26	0	12	
		33/33	65.0	32.5	32.5	6	100430 001	0.258	12	1	ON310	10	0	12	
		35/35	69.0	34.5	34.5	6	100430 001	0.272	12	1	ON310	13	0	12	
		40/30	69.0	39.5	29.5	6	100430 001	0.272	12	1	ON310	12	0	12	
		30/45	74.0	29.5	44.5	6	100430 001	0.274	12	1	ON310	27	0	12	
		35/40	74.0	34.5	39.5	6	100430 001	0.274	12	1	ON310	28	0	12	
		30/50	79.0	29.5	49.5	6	100430 001	0.301	12	1	ON310	17	0	12	
		35/45	79.0	34.5	44.5	6	100430 001	0.289	12	1	ON310	19	0	12	
		40/40	79.0	39.5	39.5	6	100430 001	0.289	12	1	ON310	18	0	12	
		30/55	84.0	29.5	54.5	6	100430 001	0.304	12	1	ON310	33	0	12	
		35/50	84.0	34.5	49.5	6	100430 001	0.360	12	1	ON310	31	0	12	
		40/45	84.0	39.5	44.5	6	100430 001	0.360	12	1	ON310	30	0	12	
		30/60	89.0	29.5	59.5	6	100430 001	0.320	12	1	ON310	20	0	12	
		35/55	89.0	34.5	54.5	6	100430 001	0.332	12	1	ON310	32	0	12	
		40/50	89.0	39.5	49.5	6	100430 001	0.320	12	1	ON310	21	0	12	
		45/45	89.0	44.5	44.5	6	100430 001	0.333	12	1	ON310	29	0	12	
		30/65	94.0	29.5	64.5	6	100430 001	0.334	6	1	ON310	41	0	12	
		35/60	94.0	34.5	59.5	6	100430 001	0.390	6	1	ON310	38	0	12	
		40/55	94.0	39.5	54.5	6	100430 001	0.355	6	1	ON310	42	0	12	
		45/50	94.0	44.5	49.5	6	100430 001	0.334	6	1	ON310	39	0	12	
		30/70	99.0	29.5	69.5	6	100430 001	0.349	6	1	ON310	24	0	12	
		35/65	99.0	34.5	64.5	6	100430 001	0.349	6	1	ON310	22	0	12	
		40/60	99.0	39.5	59.5	6	100430 001	0.349	6	1	ON310	25	0	12	
		45/55	99.0	44.5	54.5	6	100430 001	0.349	6	1	ON310	43	0	12	
		50/50	99.0	49.5	49.5	6	100430 001	0.349	6	1	ON310	23	0	12	
		30/75	104.0	29.5	74.5	6	100430 001	0.349	6	1	ON310	56	0	12	
		35/70	104.0	34.5	69.5	6	100430 001	0.349	6	1	ON310	49	0	12	
		40/65	104.0	39.5	64.5	6	100430 001	0.349	6	1	ON310	44	0	12	
		45/60	104.0	44.5	59.5	6	100430 001	0.349	6	1	ON310	54	0	12	
		55/50	104.0	54.5	49.5	6	100430 001	0.349	6	1	ON310	64	0	12	
		30/80	109.0	29.5	79.5	6	100430 001	0.378	6	1	ON310	37	0	12	
		35/75	109.0	34.5	74.5	6	100430 001	0.400	6	1	ON310	57	0	12	
		40/70	109.0	39.5	69.5	6	100430 001	0.400	6	1	ON310	35	0	12	
50/60	109.0	49.5	59.5	6	100430 001	0.402	6	1	ON310	36	0	12			
55/55	109.0	54.5	54.5	6	100430 001	0.378	6	1	ON310	70	0	12			
50/65	114.0	49.5	64.5	6	100430 001	0.378	6	1	ON310	65	0	12			
55/60	114.0	54.5	59.5	6	100430 001	0.420	6	1	ON310	71	0	12			
30/85	114.0	29.5	84.5	6	100430 001	0.400	6	1	ON310	77	0	12			
40/75	114.0	39.5	74.5	6	100430 001	0.420	6	1	ON310	59	0	12			
30/90	119.0	29.5	89.5	6	100430 001	0.410	6	1	ON310	52	0	12			
40/80	119.0	39.5	79.5	6	100430 001	0.378	6	1	ON310	60	0	12			
45/75	119.0	44.5	74.5	6	100430 001	0.410	6	1	ON310	62	0	12			
60/60	119.0	59.5	59.5	6	100430 001	0.410	6	1	ON310	40	0	12			

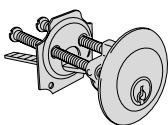
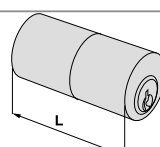
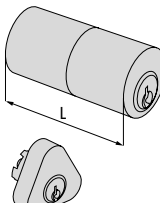
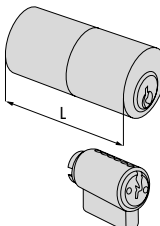
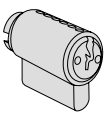
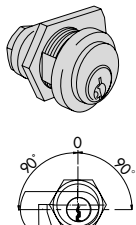
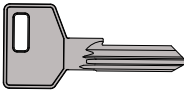
	<ul style="list-style-type: none"> Single cylinder with 14 position adjustable cam 	30/10	39.5	29.5	10.0	6	100430 001	0.185	12	1	ON314	02	0	12	
		33/10	32.5	29.5	10.0	6	100430 001	0.185	12	1	ON314	09	0	12	
		35/10	44.5	34.5	10.0	6	100430 001	0.195	12	1	ON314	07	0	12	
		40/10	49.5	39.5	10.0	6	100430 001	0.215	12	1	ON314	03	0	12	
		45/10	54.5	44.5	10.0	6	100430 001	0.225	12	1	ON314	08	0	12	
		50/10	59.5	49.5	10.0	6	100430 001	0.245	12	1	ON314	04	0	12	
		60/10	69.5	59.5	10.0	6	100430 001	0.275	12	1	ON314	05	0	12	
		70/10	79.5	69.5	10.0	6	100430 001	0.305	12	1	ON314	06	0	12	

TYPE	DESCRIPTION	COMM. DIM.	L	A	B	PINS	CHIAVE ART.	kg	NO. PIECES	ITEM						
								UNIT WEIGHT		Type	Dim.	Hand	Fin.	Pers.	Spec.	
	<ul style="list-style-type: none"> Double cylinder pre-set for thumb turn installation On request: thumb turn knobs series 06353, 06355, 06356, 06357 	30/30	59.0	29.5	29.5	6	100430 001	0.244	12	1	ON312	07	0	12		
		30/35	64.0	29.5	34.5	6	100430 001	0.264	12	1	ON312	26	0	12		
		35/30	64.0	34.5	29.5	6	100430 001	0.259	12	1	ON312	81	0	12		
		33/33	65.0	32.5	32.5	6	100430 001	0.267	12	1	ON312	10	0	12		
		30/40	69.0	29.5	39.5	6	100430 001	0.279	12	1	ON312	82	0	12		
		35/35	69.0	34.5	34.5	6	100430 001	0.279	12	1	ON312	13	0	12		
		40/30	69.0	39.5	29.5	6	100430 001	0.279	12	1	ON312	12	0	12		
		35/40	74.0	34.5	39.5	6	100430 001	0.294	12	1	ON312	28	0	12		
		30/45	74.0	29.5	44.5	6	100430 001	0.294	12	1	ON312	27	0	12		
		40/35	74.0	39.5	34.5	6	100430 001	0.294	12	1	ON312	83	0	12		
		45/30	74.0	44.5	29.5	6	100430 001	0.294	12	1	ON312	91	0	12		
		30/50	79.0	29.5	49.5	6	100430 001	0.318	6	1	ON312	17	0	12		
		35/45	79.0	34.5	44.5	6	100430 001	0.309	6	1	ON312	19	0	12		
		40/40	79.0	39.5	39.5	6	100430 001	0.309	6	1	ON312	18	0	12		
		45/35	79.0	44.5	34.5	6	100430 001	0.309	6	1	ON312	85	0	12		
		40/45	84.0	39.5	44.5	6	100430 001	0.324	6	1	ON312	30	0	12		
		45/40	84.0	44.5	39.5	6	100430 001	0.324	6	1	ON312	84	0	12		
		30/60	89.0	29.5	59.5	6	100430 001	0.353	6	1	ON312	20	0	12		
		40/50	89.0	39.5	49.5	6	100430 001	0.350	6	1	ON312	21	0	12		
		45/45	89.0	44.5	44.5	6	100430 001	0.347	6	1	ON312	29	0	12		
		40/55	94.0	39.5	54.5	6	100430 001	0.355	6	1	ON312	42	0	12		
		55/40	94.0	54.5	39.5	6	100430 001	0.367	6	1	ON312	98	0	12		
		45/50	94.0	44.5	49.5	6	100430 001	0.367	6	1	ON312	39	0	12		
		40/60	99.0	39.5	59.5	6	100430 001	0.367	6	1	ON312	25	0	12		
		45/55	99.0	44.5	54.5	6	100430 001	0.370	6	1	ON312	43	0	12		
		50/50	99.0	49.5	49.5	6	100430 001	0.370	6	1	ON312	23	0	12		
		45/60	104.0	44.5	59.5	6	100430 001	0.398	6	1	ON312	54	0	12		
		55/50	104.0	54.5	49.5	6	100430 001	0.384	6	1	ON312	64	0	12		
30/80	109.0	29.5	79.5	6	100430 001	0.400	6	1	ON312	37	0	12				
40/70	109.0	39.5	69.5	6	100430 001	0.400	6	1	ON312	35	0	12				
50/60	109.0	49.5	59.5	6	100430 001	0.400	6	1	ON312	36	0	12				

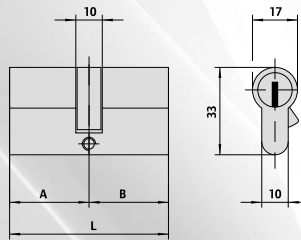
	<ul style="list-style-type: none"> Double cylinder pre-set for thumb turn installation with adjustable shaft To install with protective rose item 1.06458.20 On request: thumb turn knobs series 06353, 06355, 06356, 06357 	30/30	59.0	29.5	29.5	6	100430 001	0.284	6	1	ON317	07	0	12		
		35/30	64.0	34.5	29.5	6	100430 001	0.294	6	1	ON317	81	0	12		
		40/30	69.0	39.5	29.5	6	100430 001	0.312	6	1	ON317	12	0	12		
		45/30	74.0	44.5	29.5	6	100430 001	0.320	6	1	ON317	91	0	12		
		50/30	79.0	49.5	29.5	6	100430 001	0.329	6	1	ON317	90	0	12		
		55/30	84.0	54.5	29.5	6	100430 001	0.345	6	1	ON317	92	0	12		
		60/30	89.0	59.5	29.5	6	100430 001	0.359	6	1	ON317	87	0	12		
		65/30	94.0	64.5	29.5	6	100430 001	0.359	6	1	ON317	A3	0	12		
		70/30	99.0	69.5	29.5	6	100430 001	0.370	6	1	ON317	88	0	12		
		80/30	110.0	79.5	29.5	6	100430 001	0.359	1	1	ON317	93	0	12		

C3000 cylinders

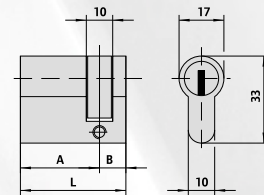


TYPE	DESCRIPTION	FOR LOCKS SERIES	L	PINS	KEY ITEM	kg	NO. PIECES	ITEM					
						UNIT WEIGHT		Type	Dim.	Hand	Fin.	Pers.	Spec.
	<ul style="list-style-type: none"> Cylinder 	1A610, 11610, 50010, 50130, 50180, 50330, 54310, 54315, 54340, 54510, 54550, 54570	6	6	100430 001	0.204	6	1	0N510	00	0	12	
	<ul style="list-style-type: none"> Tubular cylinder 	1A611, 11611, 50111, 50131, 50181, 50481, 54316, 54341	55	6	100430 001	0.204	6	1	0N210	55	0	12	
	<ul style="list-style-type: none"> Pair of cylinders with external tubular cylinder 	50121, 50126, 50141, 50161, 50171, 50211, 50211, 50221, 50421, 50451, 50471, 50521, 50571	50.0	6	100430 001	0.295	6	1	0N116	00	0	12	
		11721, 11921	55.0	6	100430 001	0.295	6	1	0N149	00	0	12	
	<ul style="list-style-type: none"> Pair of cylinders with external tubular cylinder 	1A631, 1A721, 1A731	55.0	6	100430 001	0.295	6	1	0N150	00	0	12	
	<ul style="list-style-type: none"> Steel plug for padlocks 2 keys Pickled brass body Complete with plate item 1.07573.08.0 		6		100430 001	0.117	6	1	0N610	00	0		
	<ul style="list-style-type: none"> Key extraction to position (0) Deadbolt item 1.06414.20.0 or 1.06414.30.0 (to be ordered separately) 		17	6	100430 001	0.117	6	1	0N410	00	0	12	
	<ul style="list-style-type: none"> Nickel silver alloy 3D trademark Paracentral keyway <p>KEYBLANK DISTRIBUTION IS REGULATED BY CONTRACT</p>		6			0.117	50	1	00430	00	1		

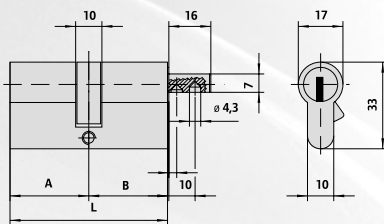
Drawings and dimensions.



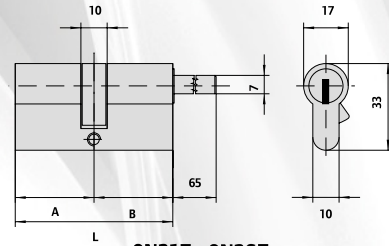
ON310 - ON351



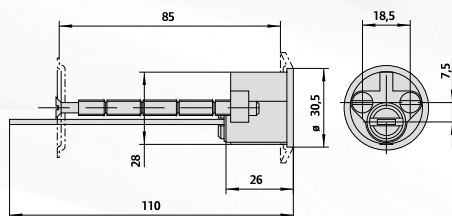
ON314 - ON324



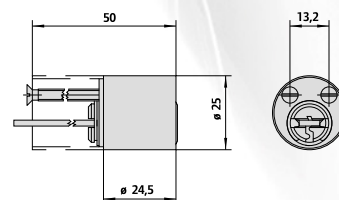
ON312 - ON352



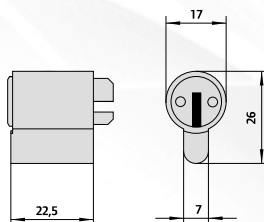
ON317 - ON357



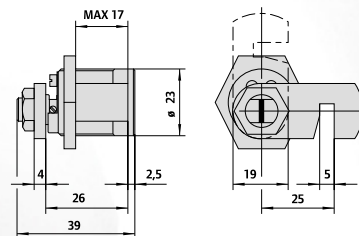
ON510



ON210



ON610



ON410

SPECIFICATIONS

C3000 CYLINDERS

- Controlled duplication system: traditional key in nickel silver alloy protected by Trade Mark and can only be duplicated at CISA C3000 Centres or CISA.
- Certified protection against pulling and tearing thanks to SNAP RESISTANT patented technology (**C3000 S**): bi-material segment pack in hardened steel and stainless steel central segment visible from the outside on both sides of the cylinder.
- Certified protection against bumping, thanks to BKP patented technology.
- Certified drill resistance, thanks to the key biting system in hardened steel and the additional inserts of **C3000 S**.

Standards

- C3000 S**: in compliance with EN 1305:2015

Key Related Security: 6
Attack Resistance: D
Durability: 6

- C3000**: in compliance with EN 1305:2015

Key Related Security: 6
Attack Resistance: A
Durability: 6

Technical features

Cylinder:

- 6-pin key biting system
- Brass body with segment pack along the whole length of the cylinder **C3000 S**
- Brass plugs
- Hardened steel pins and drivers
- Phosphor bronze and steel springs

Keys:

- Paracentral keyway protected by 3D Trade Mark
- In nickel silver alloy with ergonomic grip
- Key blade 12 mm long
- Numerical code on key bow

Supplied as standard

- 3 keys
- Security Card
- Fixing screw

Finishes

- Nickel-plated satin brass
- Sanded brass

Patents

- Key protected by 3D Trade Mark no. 1 236 248 and Community Design registered at no. 2669630
- Snap Resistance: Europe EP1583878, Russia RU2361989
- BKP device: patent no. PCT/WO 2007/074163 A1

About Allegion™

Allegion (NYSE: ALLE) is a global pioneer in safety and security, with leading brands like CISA®, Interflex®, LCN®, Schlage®, SimonsVoss® and Von Duprin®. Focusing on security around the door and adjacent areas, Allegion produces a range of solutions for homes, businesses, schools and other institutions. Allegion is a \$2 billion company, with products sold in almost 130 countries.

For more visit allegion.com

